

Christmas Carols

for viola

Compiled and edited by Ryan Youens, December 2011.

www.ryanyouens.com

Angels we have heard on high

Traditional

Musical score for 'Angels we have heard on high' in 3/8 time. The score consists of four staves of music. The first staff begins with a *mf* dynamic marking. The second staff starts at measure 6 and includes a *f* dynamic marking. The third staff starts at measure 11, and the fourth staff starts at measure 16. The music features a mix of quarter, eighth, and sixteenth notes, often beamed together, with some notes marked with accents.

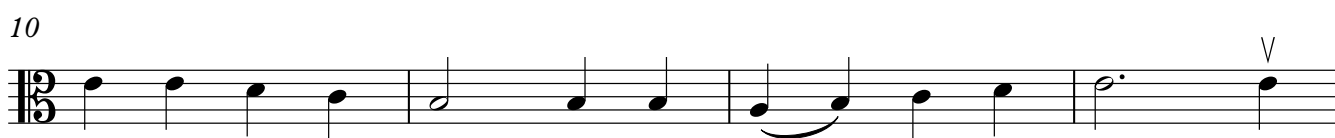
Joy to the world!

Mason

Musical score for 'Joy to the world!' in 3/8 time. The score consists of four staves of music. The first staff begins with a *f* dynamic marking. The second staff starts at measure 6, the third at measure 11, and the fourth at measure 16. The music features a mix of quarter, eighth, and sixteenth notes, often beamed together, with some notes marked with accents (V).

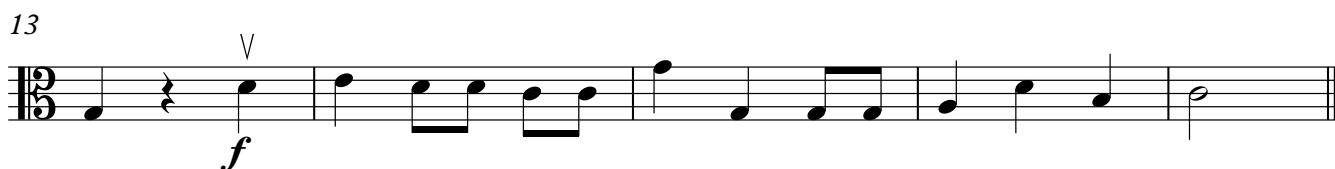
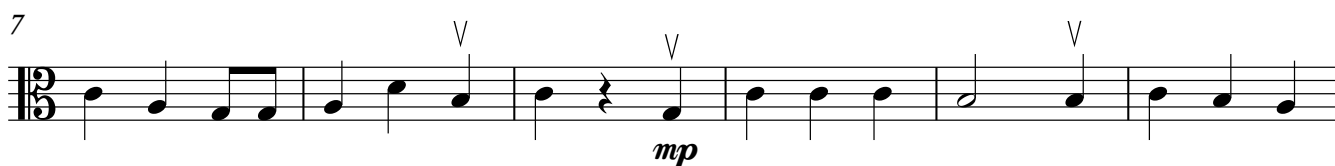
O little town of Bethlehem

Traditional



We wish you a merry Christmas

Traditional



It came upon the midnight clear

Traditional

Musical score for "It came upon the midnight clear" in 3/4 time, featuring a single melodic line on a treble clef staff. The key signature has one flat (B-flat). The score is divided into four systems, each starting with a measure number (4, 6, 10, 14) and a dynamic marking. The first system (measures 4-5) starts with a *mf* dynamic and a breath mark (V). The second system (measures 6-7) ends with a *f* dynamic and a breath mark. The third system (measures 10-11) ends with a *mf* dynamic and a breath mark. The fourth system (measures 14-15) concludes the piece with a double bar line.

O come, O come Emmanuel

Traditional

Musical score for "O come, O come Emmanuel" in 3/4 time, featuring a single melodic line on a treble clef staff. The key signature has one flat (B-flat). The score is divided into four systems, each starting with a measure number (1, 6, 11, 16) and a dynamic marking. The first system (measures 1-4) starts with a *mp* dynamic and a breath mark (V). The second system (measures 6-7) has a breath mark (V) above measure 7. The third system (measures 11-12) has a *f* dynamic marking below measures 11-12 and a breath mark (V) above measure 12. The fourth system (measures 16-17) ends with a *mp* dynamic marking below measures 16-17 and a double bar line.

O come, all ye faithful

Traditional

Musical score for "O come, all ye faithful" in 3/8 time. The score consists of four staves of music. The first staff begins with a dynamic marking of *f* and a breath mark (V) above the first note. The second staff starts at measure 6. The third staff starts at measure 12 and includes dynamic markings of *mp* and *mf* with breath marks (V) above the notes. The fourth staff starts at measure 17 and includes a dynamic marking of *f* with a slur under the first four notes. The piece concludes with a double bar line.

Jingle Bells

Pierpont

Musical score for "Jingle Bells" in 3/8 time. The score consists of four staves of music. The first staff begins with a dynamic marking of *f* and a breath mark (V) above the first note. The second staff starts at measure 5. The third staff starts at measure 9. The fourth staff starts at measure 13 and concludes with a double bar line.

O Holy Night

Adam

1 *mp*

4

8 *mf*

12

15 *f*

19

23

Away in a manger

Kirkpatrick

Musical score for 'Away in a manger' in 3/4 time, key of D major. The score consists of three staves. The first staff begins with a *mf* dynamic and a *V* marking above the first measure. The second staff starts at measure 7 and has a *V* marking above the 10th measure. The third staff starts at measure 12 and has *V* markings above the 13th, 15th, and 17th measures. The piece concludes with a double bar line at the end of the third staff.

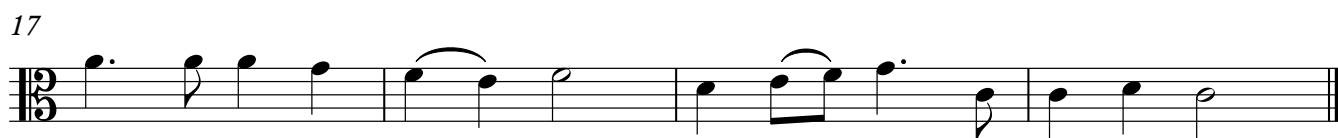
God rest you merry, gentlemen

Traditional

Musical score for 'God rest you merry, gentlemen' in 3/4 time, key of D major. The score consists of four staves. The first staff begins with a *f* dynamic and a *V* marking above the first measure. The second staff starts at measure 6 and has a *V* marking above the 10th measure. The third staff starts at measure 11. The fourth staff starts at measure 16 and concludes with a double bar line at the end of the staff.

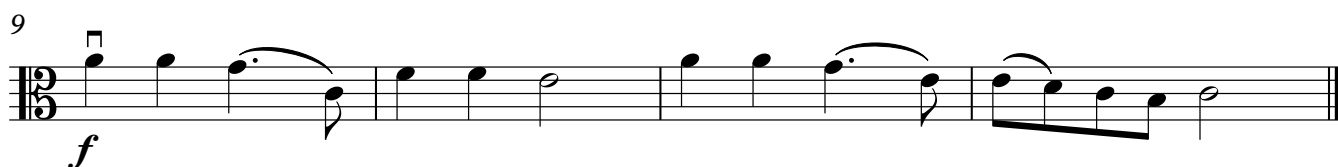
Hark! the herald angels sing

Mendelssohn



Once in Royal David's City

Gauntlett



We three Kings

Hopkins

1

mf

Musical staff 1 for 'We three Kings'. It begins with a treble clef, a key signature of one sharp (F#), and a 3/4 time signature. The melody starts with a quarter note G4, followed by quarter notes A4, B4, C5, B4, A4, and G4. A dynamic marking of *mf* is placed below the first note.

7

Musical staff 2 for 'We three Kings'. It continues the melody with quarter notes G4, A4, B4, C5, B4, A4, and G4. The final note G4 is tied to the first note of the next staff.

13

13

f

Musical staff 3 for 'We three Kings'. It continues the melody with quarter notes G4, A4, B4, C5, B4, A4, and G4. A dynamic marking of *f* is placed below the first note. A fermata is placed over the second note A4.

20

Musical staff 5 for 'We three Kings'. It continues the melody with quarter notes G4, A4, B4, C5, B4, A4, and G4.

27

Musical staff 6 for 'We three Kings'. It continues the melody with quarter notes G4, A4, B4, C5, B4, A4, and G4. The piece ends with a double bar line.

The First Nowell

Traditional

1

mf

Musical staff 1 for 'The First Nowell'. It begins with a treble clef, a key signature of one sharp (F#), and a 3/4 time signature. The melody starts with a quarter note G4, followed by quarter notes A4, B4, C5, B4, A4, and G4. A dynamic marking of *mf* is placed below the first note.

7

Musical staff 2 for 'The First Nowell'. It continues the melody with quarter notes G4, A4, B4, C5, B4, A4, and G4. A dynamic marking of *mf* is placed below the first note.

12

Musical staff 3 for 'The First Nowell'. It continues the melody with quarter notes G4, A4, B4, C5, B4, A4, and G4. The piece ends with a double bar line.